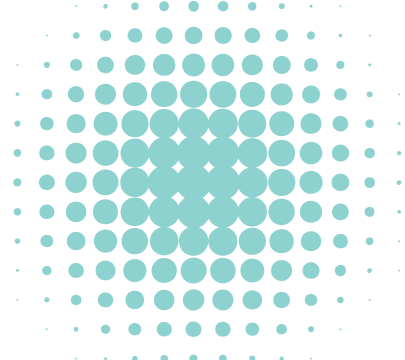
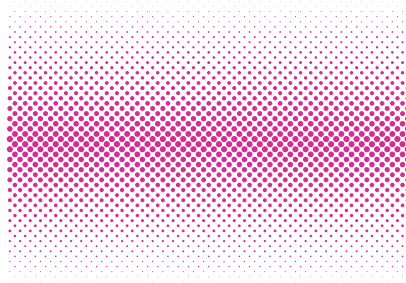
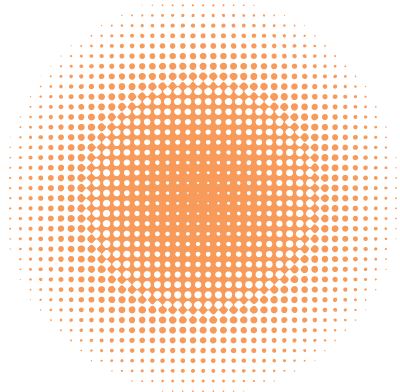


VECTOR Big, Bold and Beautifully Crisp

No RIP required



Created (1) manually, with (2) Rasterbator or (3) pulled from a myriad of online sources.

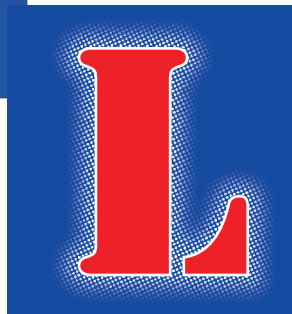
GREYSCALE From Corel conversion

grabbed from Preston's video

No RIP required



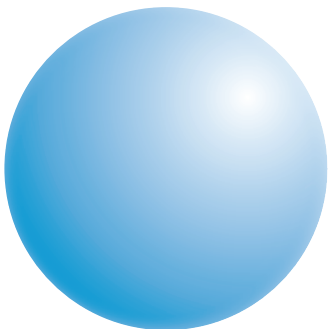
LAKE WRESTLING



- Convert to Greyscale
- Add Gaussian blur
- Mode Black & White Halftone
- Change dot/lpi and angle.

MONO BITMAP From Corel conversion

Commercial RIP or (free) Ghostscript required.



- Convert to RGB
- Add (substantial) Gaussian blur
- Mode Black & White
- Accept defaults
- Add Lens/Transparency if desired.